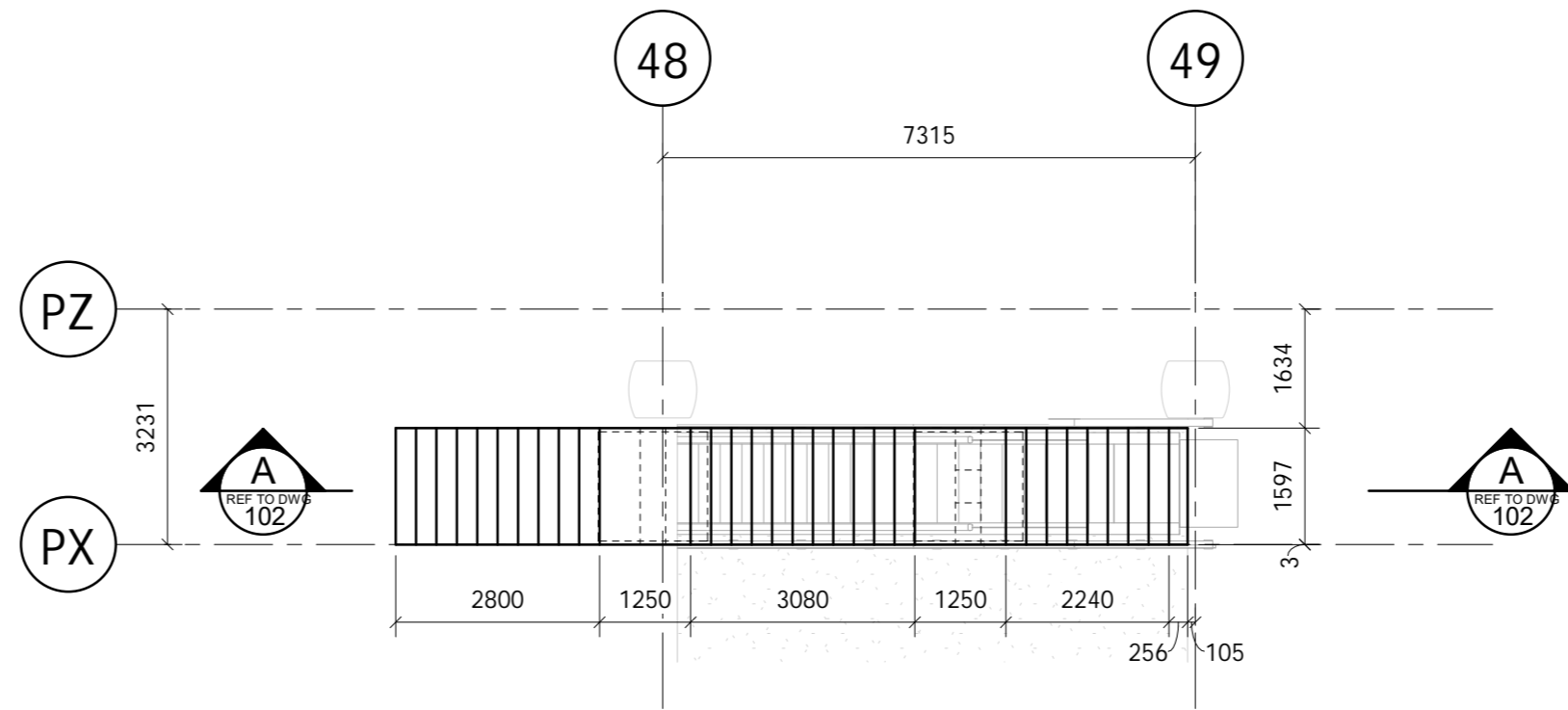
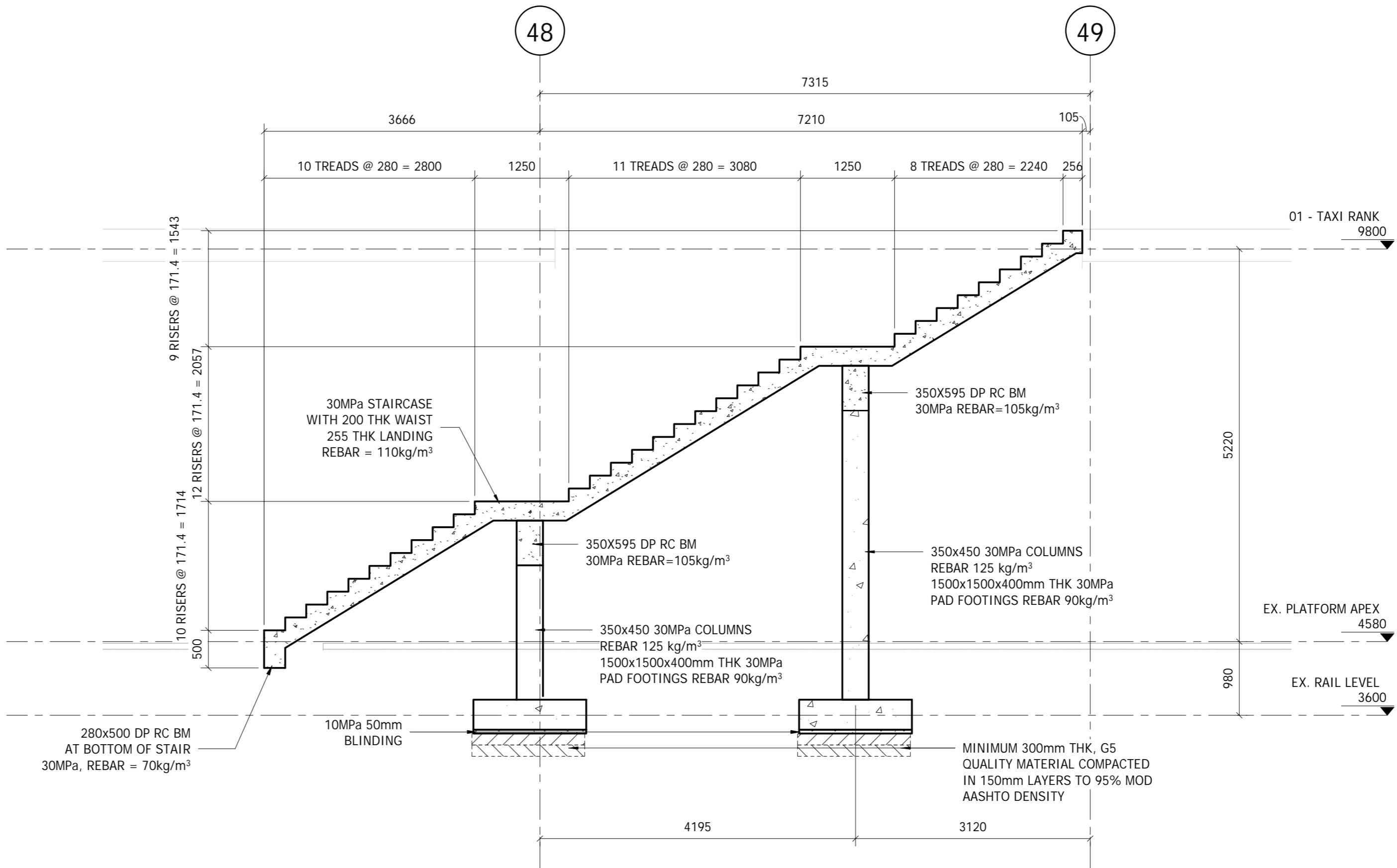


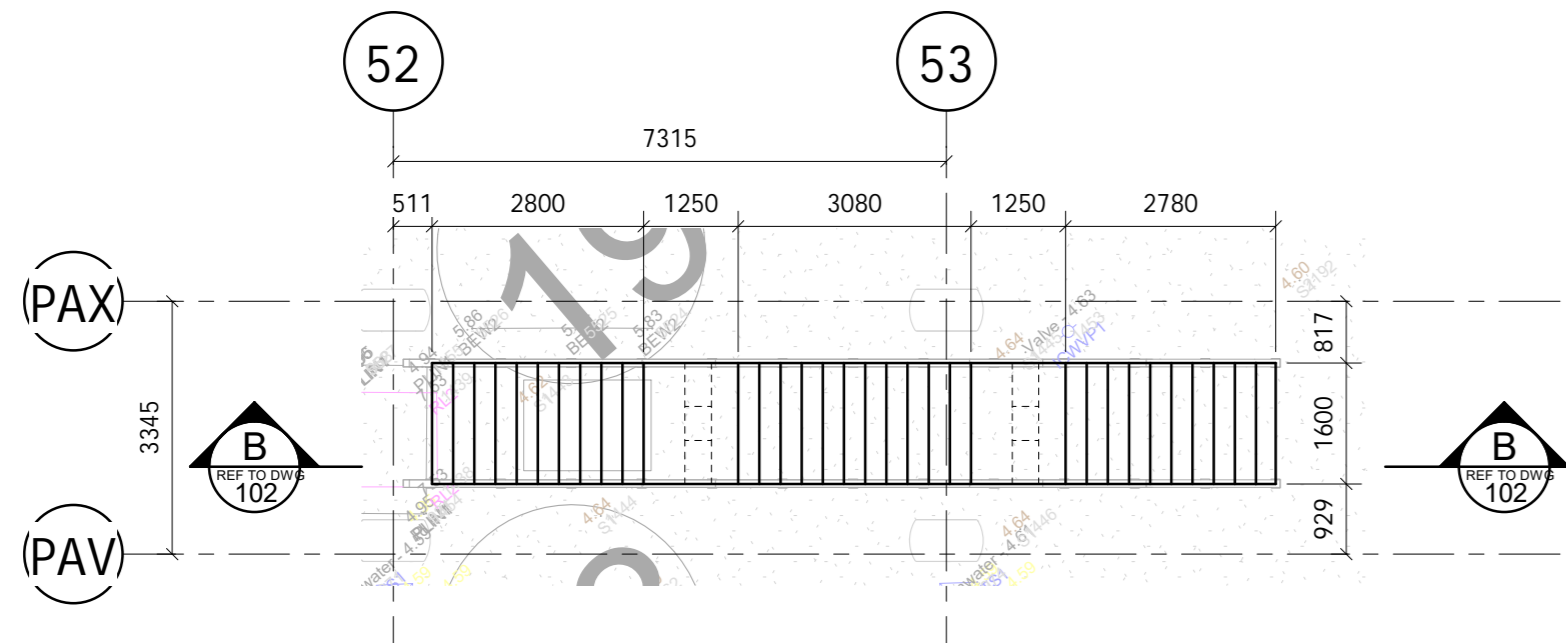
STAIRCASE LAYOUT
Scale 1 : 250



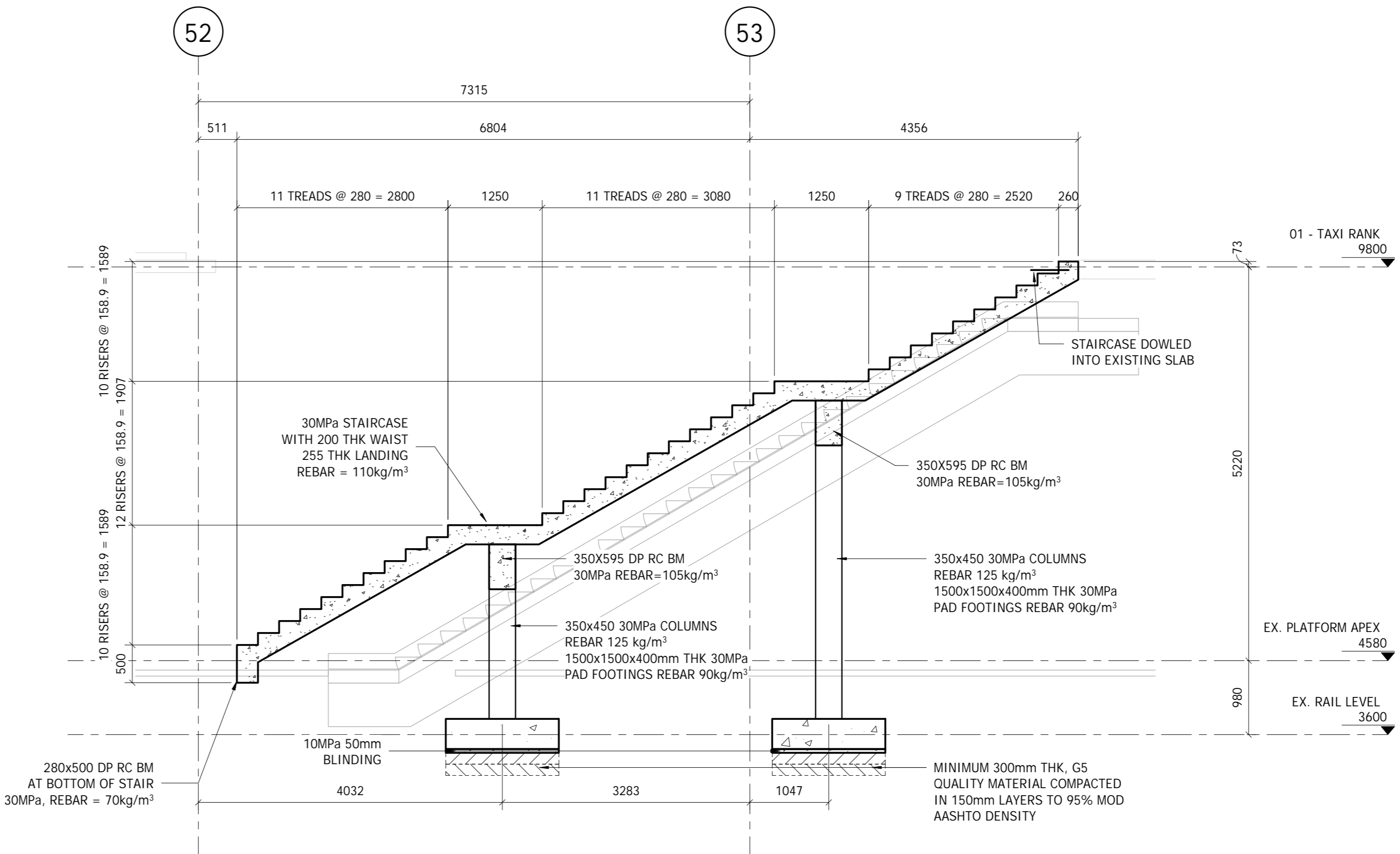
STAIRCASE LAYOUT G/L 48&49 (3No. OFF)
Scale 1 : 100



SECTION A-A
Scale 1 : 50



STAIRCASE LAYOUT G/L 52&53
Scale 1 : 100



SECTION B-B
Scale 1 : 50

Rev	Date	Description	Name
A	22-01-28	FOR INFORMATION	AAF
B	22-03-18	FOR INFORMATION	AAF

SCOPE OF WORKS NOTE:

S1: STRUCTURAL REPAIRS TO CRACKED, SPALLED, WATER AND FIRE DAMAGED CONCRETE ELEMENTS I.E. SLABS, BEAMS, COLUMNS AND WALLS. APPROX = 16 500 m²

S2: STRUCTURAL REPAIR TO CRACKED BRICK WALLS (BRICKWORK STITCHING IF REQUIRED). APPROX = 200 m²

S3: REMOVE AND REPLACE ALL SEALANTS AND BACKING CORDS TO THE EXISTING MOVEMENT JOINTS IN COLUMNS, SLABS AND BEAMS, ETC. APPROX = 15 000 m²

S4: NEW PRE-CAST OR CAST IN-SITU RC EDGE COPING SLAB TO MATCH THE NEW RAISED PLATFORM LEVEL. PORTION WHERE PLATFORM REST ON BASEMENT SLABS WILL REQUIRE CAPACITY CHECKS. SEE MARK-UP DRAWING CEIC158 - ST - ST3 - 100 0A - TYPICAL SECTION THROUGH PLATFORM EDGE COPING MARK-UPS.

S5: CAST NEW 15MPa MASS CONCRETE STAIRS WHERE RAISED PLATFORMS STOPS SHORT OF PERIMETER WALLS. ON MINIMUM 150mm IN-SITU RIP AND RECOMPACTED MATERIAL TO 95% MOD AASHTO, COMPLETE WITH 10mm SOFT BOARD GAP JOINT AND APPROVED POLYURETHANE SEALANT. APPROX = 5 m³

S6: REPLACE OF PRE-CAST CONCRETE ROOF PLANKS ON PLATFORMS TO MATCH EXISTING. APPROX = 8 000 m²

S7: REMOVE AND PLATFORM ESCALATORS AND REPLACE WITH NEW CAST IN-SITU RC STAIRS TO MATCH THE SHAPE OF THE EXISTING STAIRCASES, COMPLETE WITH SUPPORTING RC BEAMS, COLUMNS AND FOUNDATIONS. SEE DRAWING CEIC158 - ST - 102

S8: REMOVE AND REPLACEMENT OF ALL WATERPROOFING TO THE EXISTING BUTTERFLY ROOFS TO ARCHITECTS SPECIFICATIONS.

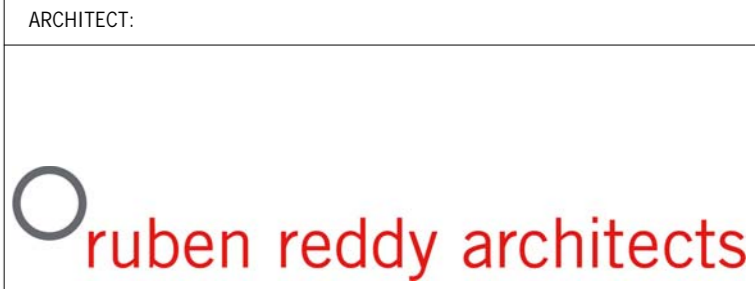
S9: STRUCTURAL DESIGN OF THE SECONDARY STEEL SUPPORT FRAME FOR THE NEW RAINSCREEN CLADDING ON THE TAXI RANK WALKWAY. STEEL TONNAGES = 20 kg/m²

S10: STRUCTURAL DESIGN FOR THE MEZZANINE FLOOR AND ROOF STRUCTURE TO ACCOMMODATE CENTRAL TICKET OFFICE STAFF SUPPORT AREAS. FLOOR SUPPORT STRUCTURAL STEEL TONNAGES = 25 kg/m² STRUCTURAL STEEL ACCESS STAIRCASE STEEL TONNAGES = 25 kg/m² BOND-LOK SLAB, COMPLETE WITH SHEAR STUDS, 120mm THICK 20 MPa CONCRETE AND MESH REF 611. APPROX = 255 m²

S11: STRUCTURAL DESIGN ON THE NEW SECONDARY SUPPORT STEEL FOR PARADE CONCOURSE FACIA REPAIRS AT SOUTH END. STEEL TONNAGES = 16 kg/m²

S12: STRUCTURAL DESIGN OF THE NEW CENTRAL RETAIL KIOSKS. SEE DRAWING CEIC158 - ST - 200

S13: STRUCTURAL INPUT AND STEEL LINTEL REQUIREMENTS ON THE BUILDING ALTERATIONS. ALLOW FOR STEEL LINTEL SUPPORT = 357x165x40 UB APPROX LENGTH 80m



NAME	REG. NO.	SIGNATURE
J. MAVUNDLA	202201197	
R. THYS	20180331	
E. TLOMATSANA	2017305033	

PROJECT DESCRIPTION

CAPE TOWN STATION

DRAWING TITLE

STAIRCASE LAYOUTS AND TYPICAL SECTIONS

STATUS LEGEND

SHEET SIZE

NAME: R. THYS

PR. NO.: 20180331

DATE: 2022-03-17

SIGNATURE:

